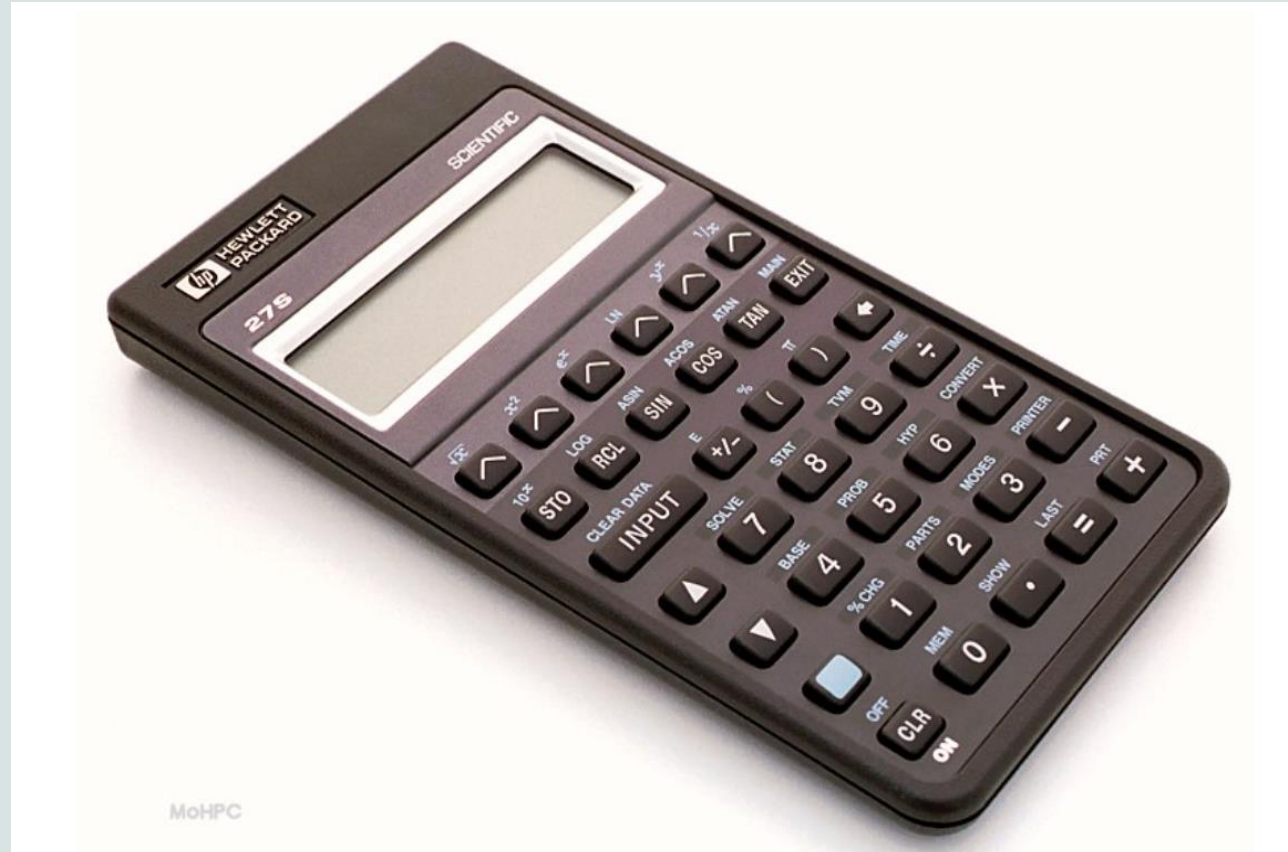


HP 27S SCREEN REPLACEMENT



- ANDREW CHILDS

About the 27S

- Algebraic Scientific Calculator
- Saturn Architecture
- Manufacture 1988 – 1991
- Programmable through Solver

Ebay purchase £50

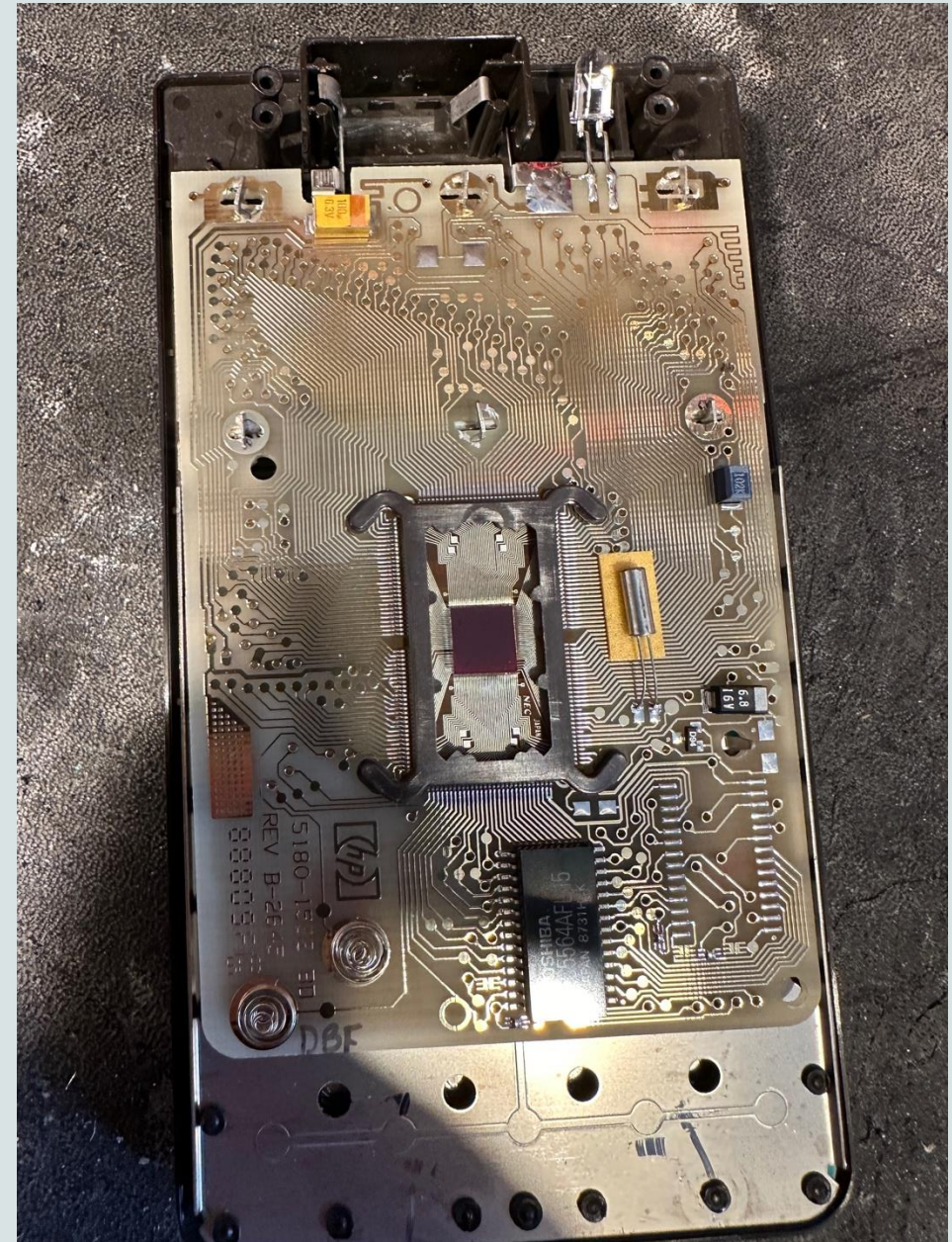
Early life LCD failure- very clean unit



Case Removal

- Prize the case apart with back of tweezers – ‘defeating 7Nr heat stakes’.

Donor screen – From HP17B



17B vs 27S

Main PCB part number

17B:- 5180-1532 BD Rev B-2645

27S:- 5180-1532 BD Rev B-2645

- 8k x8Bit Static CMOS RAM
- 17B also has a 32k x 8Bit MOS ROM



Matching LCD

Model :

- EPSON LD-B8807A-1

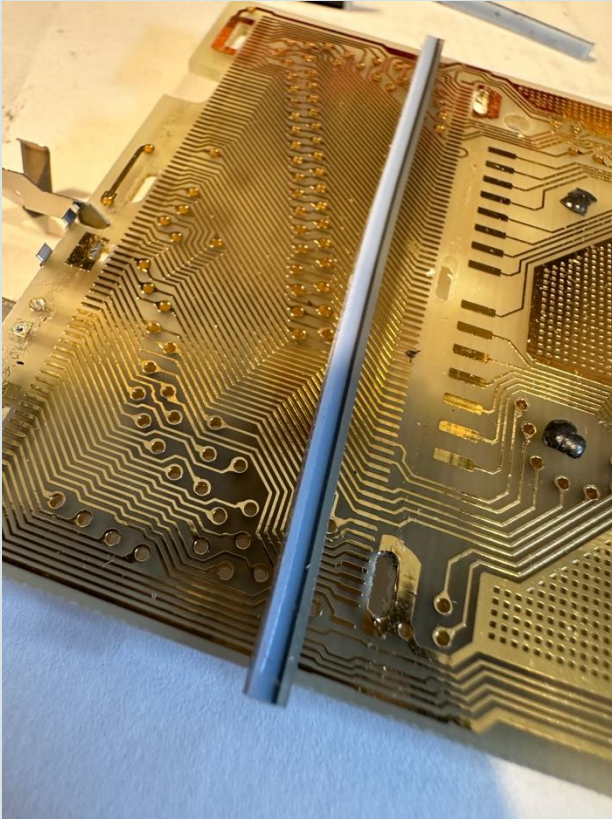


More heat stakes!

- Gently pull the head 'flange' up and cut off some material.
- Lift the metal chassis with LCD



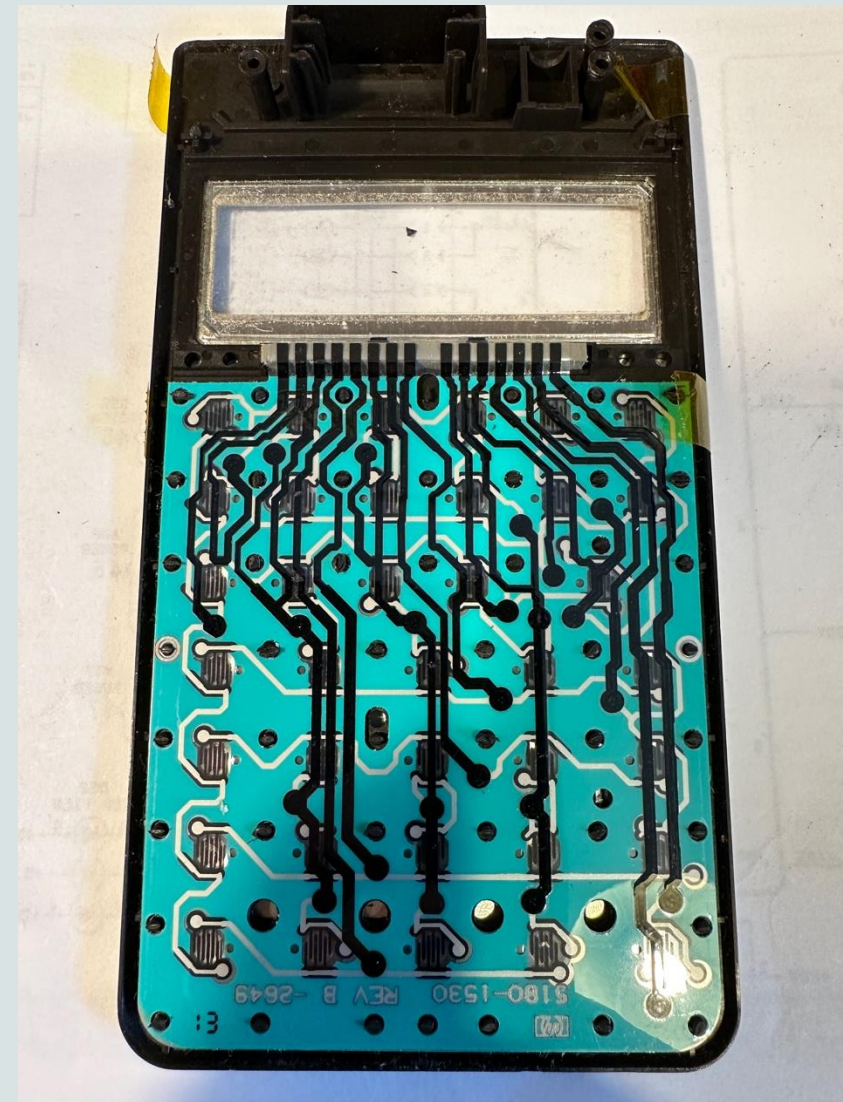
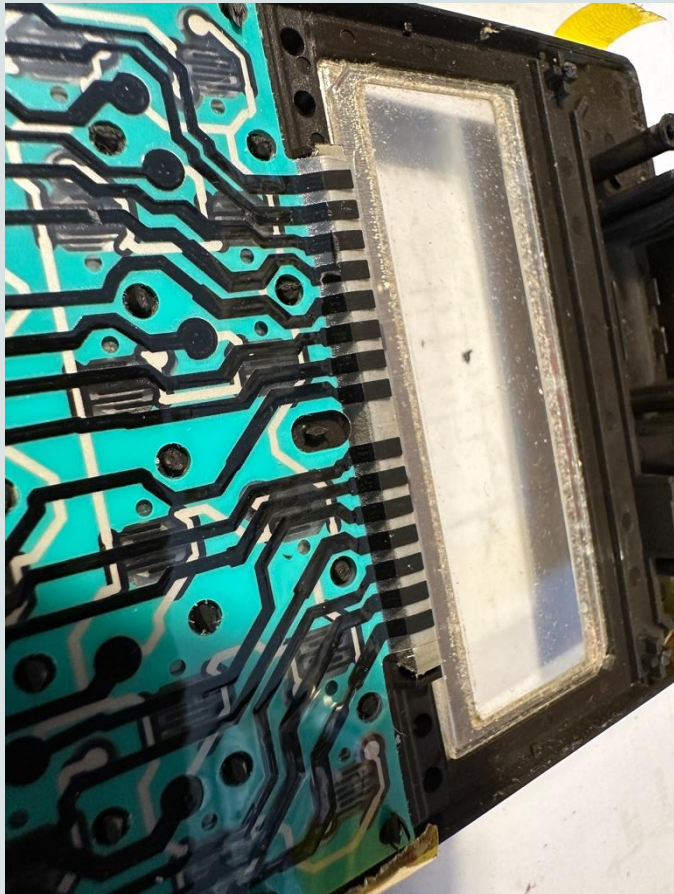
LCD & Zebra Strips



- Rubber zebra strips sit upon the LCD contacts and compress onto the gold-plated PCB contacts.
- 'Cleanliness is next to godliness'!

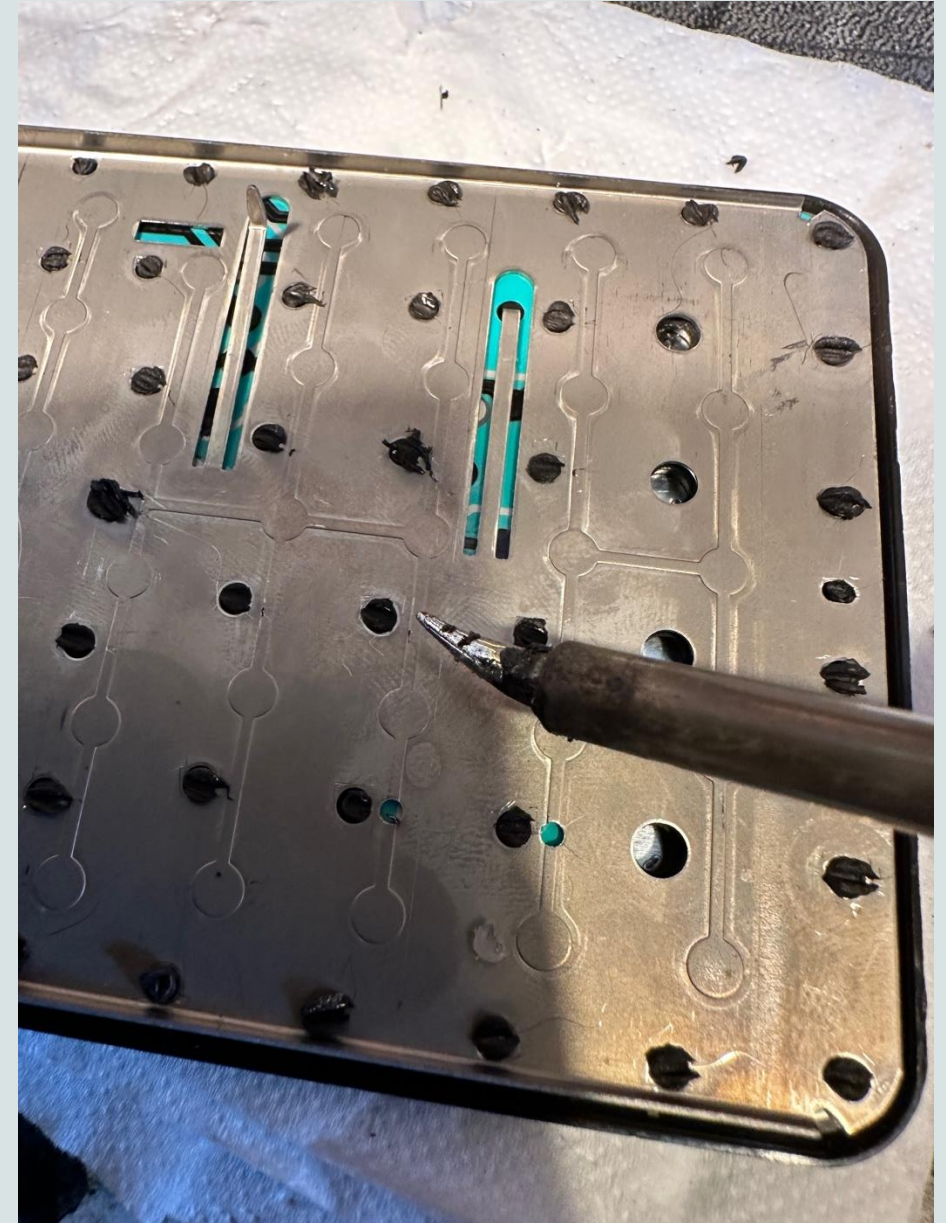
Rear of Keypad

(and another common problem)



Swap the chassis assy. Inc. Screen

- Push through the heat stakes
- Compress the chassis to keyboard
- Melt the heat stakes



Case Heat-Stakes

- Heat with hot air
- Form to cylindrical shape with tweezers - remove 'mushroom' shape head



Finished HP 27S

- No RPN calculators were harmed in this repair.
- HP 17B and H27S share a platform in terms of (base) PCB, LCD, Chassis

